



Kellett Road, Brixton, SW2

2 bedroom flat - conversion for sale

£500,000

Share of Freehold

Property Details

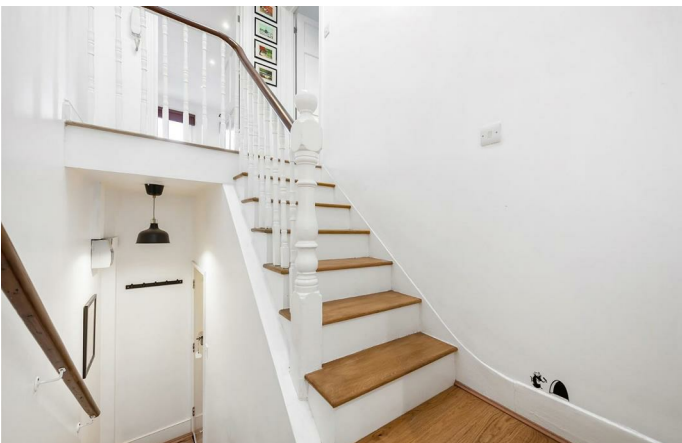
A perfectly laid-out, two double bedroom flat on the top floor of an attractive Victorian terrace, on one of Brixton's most sought-after streets. Kellett Road is highly sought-after for its character and proximity to central Brixton, Herne Hill and Brockwell Park. The property is situated in moments away from the fashionable bars, restaurants and cafés of Brixton Village and Pop Brixton. This secure top floor flat is within a four-minute walk of both the tube station and the train station. Victoria Station is accessible in just thirteen minutes door-to-door, and the City is only twenty-one minutes away. Oxford Circus and the bright lights of Soho can be reached in just 18 minutes. This beautifully presented apartment has been completely refurbished by the current owners, creating a home that feels instantly liveable, the moment you walk through the door.

Features

- Two double bedrooms
- Victorian conversion
- Bright and airy throughout
- Split over various levels
- 600 square feet of internal living space
- Sought-after location
- Short walk to Brixton Village and Brockwell Park
- Share of freehold

Council tax band C

EPC rating C (75)



Kellett Road, Brixton, SW2



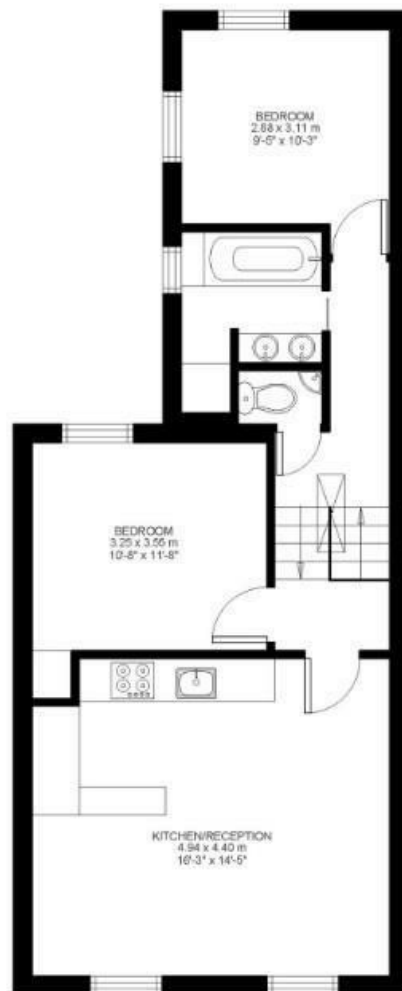
2 Bed flat

Approx internal area:

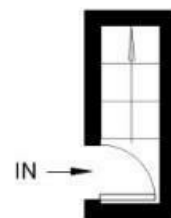
600 sqft 56 sqm

While we do try our very best, floor plans are produced as a guide only and we take no responsibility for the precise accuracy with which any property is represented

Kellett Road



Second Floor



First Floor



Kellett Road, Brixton, SW2

